

NETZSCH

Proven Excellence.

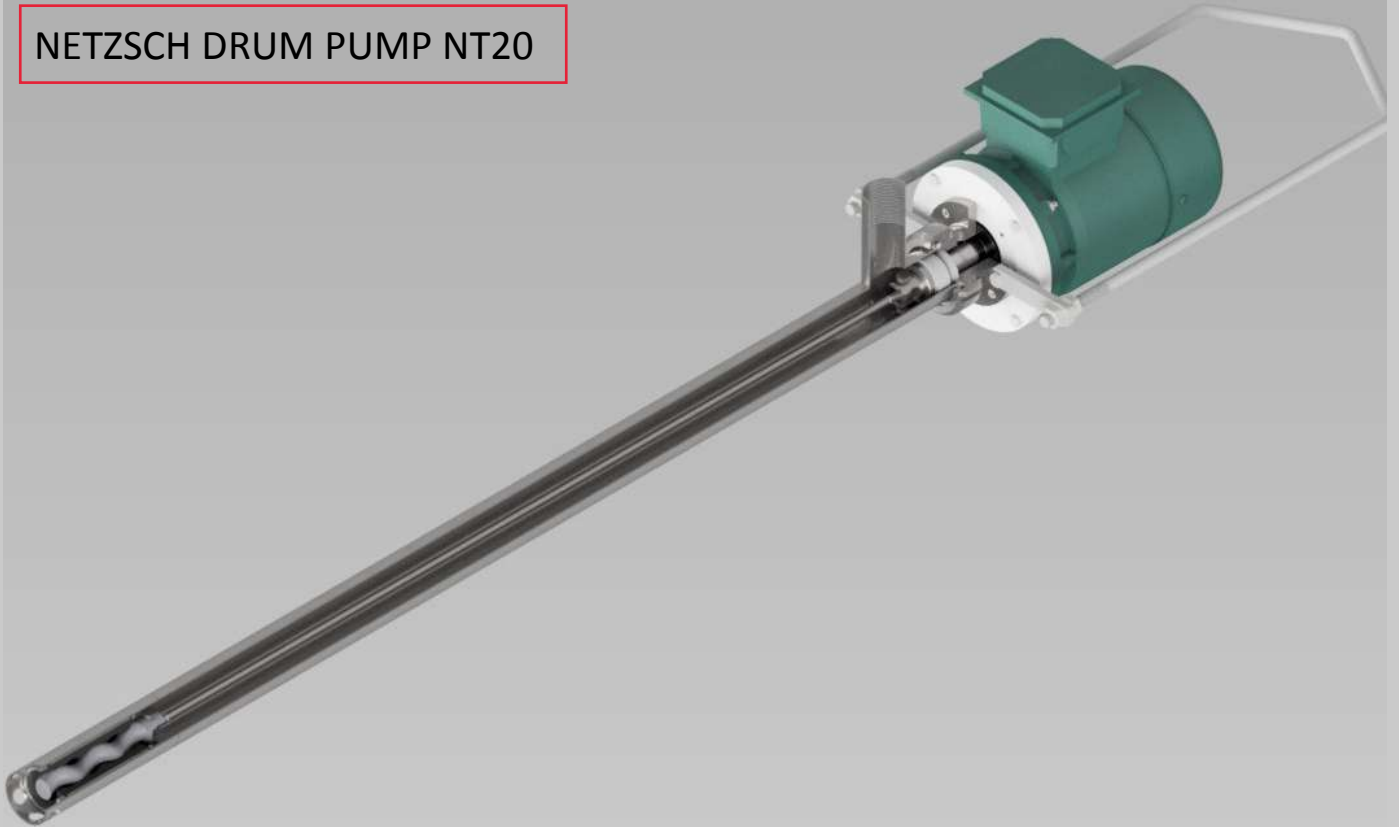


Chemical, Pulp & Paper

Product Overview, Technology and Application Areas

Pumps & Systems

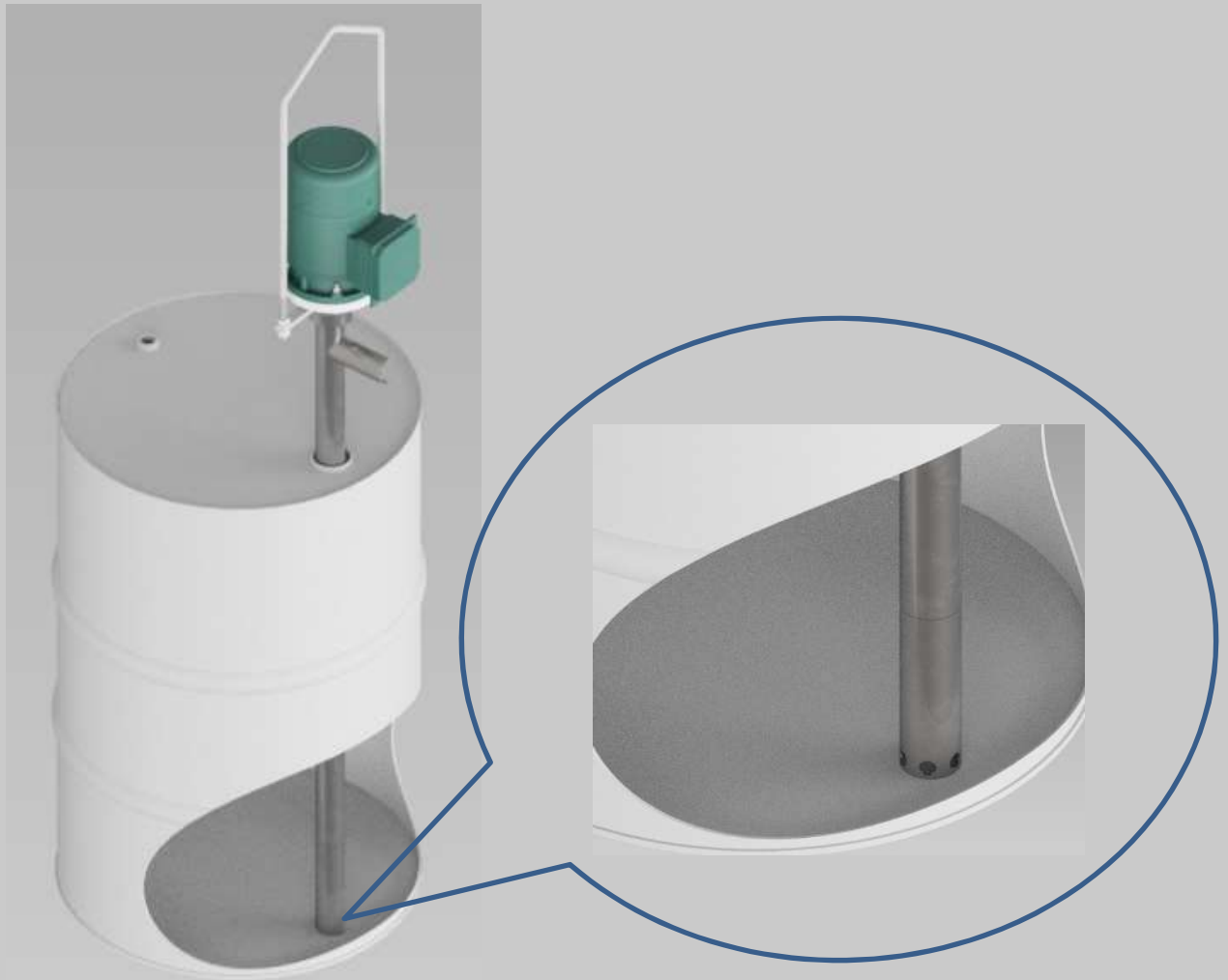
NETZSCH DRUM PUMP NT20



Technical Data

- Flow up to 2.4 m³/h
- Pressure up to 6 bars (87 psi)
- Temperature up to 100° C (211° F)
- Viscosity up to 70000 to 100000 Cps
- Light Weight & Slim for ease of entry with max Dia 54mm.
- Hygienic model available with sanitary flange connections

NETZSCH DRUM PUMP NT20



- Deep reach of pump ensure extract of every drop of liquid from Drum.
- Different Immersion depth as per drum depth available.

TECHNICAL SPECIFICATION

Item No	1
Pos 0010 NEMO [®] Pump Type	ND20
Service	Lube Oil ISO VG 680
Tag No	0010

OPERATING PARAMETERS

Fluid	Lube Oil ISO VG 680	
Pumping Temperature	Ambient	°C
Specific Gravity	Not Given	kg/cm ²
Solids Size (mm)	Assumed Micron	micron
Solids (%)	Assumed 5	%
Viscosity (cP)	Not Given	cP
pH	Assumed neutral	
NPSH Available	Not Given	m
Suction Conditon / Head	Assumed Flooded	barg
Discharge Pressure / Head	6	bar
Differential Pressure	6	bar
Operation Duty	Intermittent	

PUMP PARAMETERS

Flow	2	m ³ /h
------	---	-------------------

MATERIAL OF CONSTRUCTION

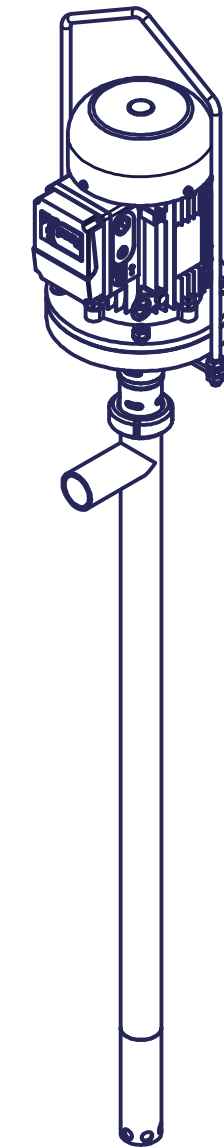
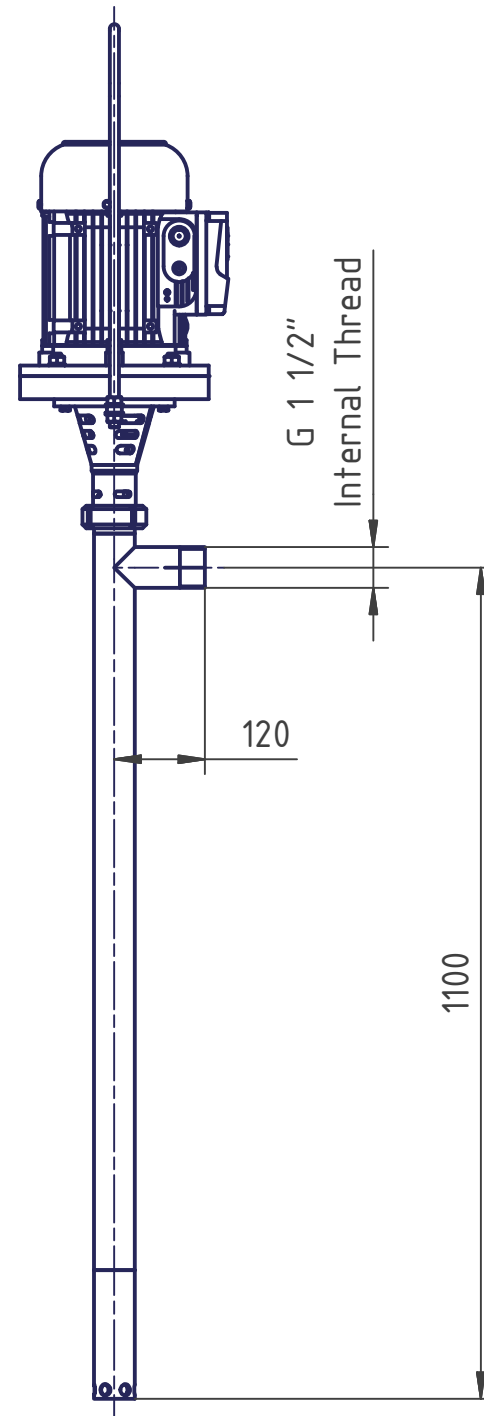
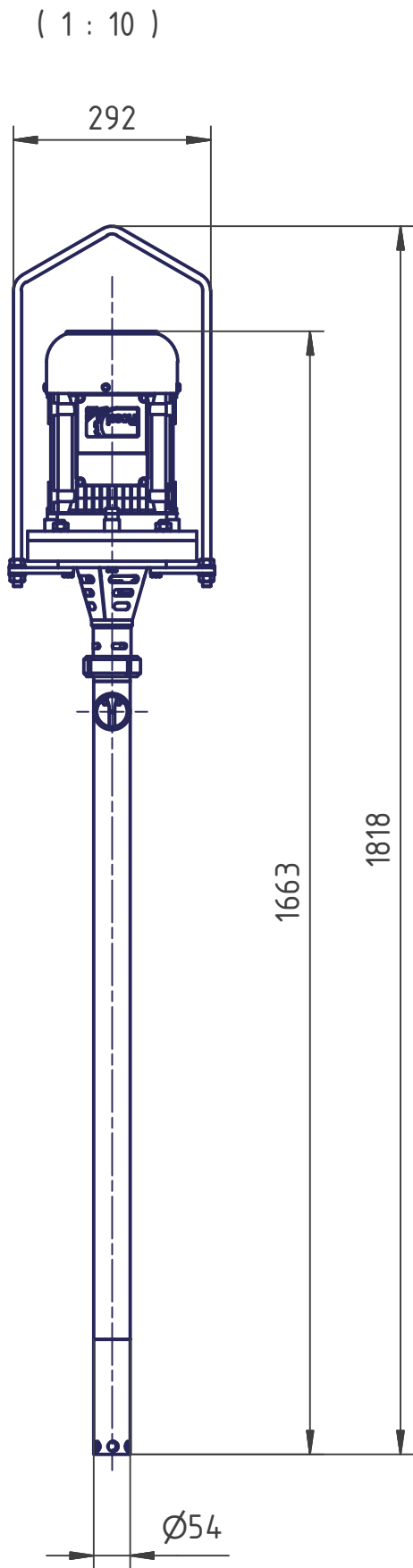
Pump Body / Wettable Parts	V4A
Rotor	V4A
Stator	NEMOLAST [®] S62L
Connections	SMS
Motor	FLP 1.5KW/950

PAINTING

Finish Colour	Manufacturer Standard
---------------	-----------------------

NOTE

--



Weight Table

Pump	Weight (Kg)	Motor	Weight (Kg)	Total Weight (Kg) (Pump+Motor)
NT20	8	1.5 kW 6 Pole	16	24
NT20	8	1.5 kW 8 Pole	19	27

Note : Values put in above table are approximate and may change based on type of motor used or change in design

Allgemeintoleranz General tolerance ISO 2768-mK-E		NETZSCH		Benennung/Description		
Datum/Date		Name/name		Drum Pump		
16.08.2017		Sagar				
gezeichnet drawn		geprüft/freigegeben checked/released		Zeichng.-Nr./Drawing No.:		Teil./Part:
Type:		NT20		NT17102532		1
Für diese technische Unterlage behalten wir uns alle Rechte vor. All rights reserved.						Ver.
						A3